

January 24, 2025

Reference: CSIO/MSSA/HCP0057/197

Subject: Call for Expression of Interest (EoI)/quotation for the purchase of goods/fabrication job work for the ongoing project activities- reg

It is informed that following items are proposed to be purchased /fabricated. Interested parties are requested to **submit quotation** through email/hard copy to the undersigned **within next three days** from the date of publishing of notice.

Items/Goods/Job work required

Sr. No.	Description of the items/Goods/Jobwork	Quantity
1.	Custom Fabrication of PCBs for different sensors and components assembly as per attached (Annexure-I)	as per Annexure-I

Terms and Conditions:

Delivery: For CSIR-CSIO, Chandigarh

Lead time/delivery time: 2-3 weeks

Payment: After delivery and successful inspection



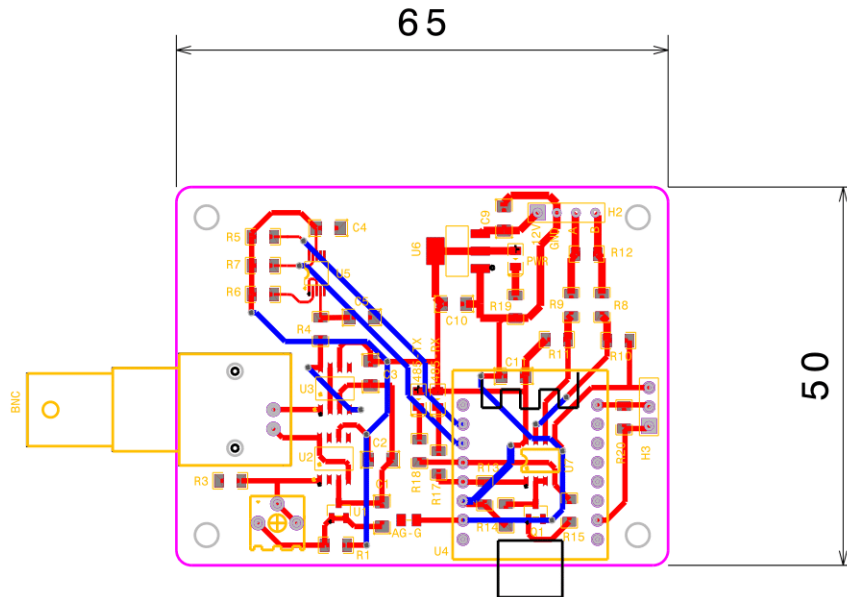
Dr Babankumar S. Bansod
Senior Principal Scientist & Project Leader
9888520252; scientist_babankumar@csio.res.in

HEAD ISD, with a request to display on the CSIO website

FABRICATION OF ITEMS AS PER -ANNEXURE 1

S.NO	DESCRIPTION	Quantity
1.	Custom PCB Fabrication pH sensor with components <i>PCB Dimensions: 50.00mm x 65.00 mm</i> <i>Blank PCB</i>	1 Unit 4 Units
2.	Custom Amperometric_Sensor PCB with components <i>Dimensions: 30.00 x 30.00 or Dia 30mm</i> <i>Blank PCB</i>	1 Unit 4 Units
3.	Custom Fabrication Color sensor with mechanical components a) Cuvette Setup for Colour Sensor <i>Dimensions: 40.00 x 41.50 x 74.00</i> b) Main PCB for colour sensor with components <i>PCB Dimensions: 120.00mm x 80.00 mm</i> <i>Blank PCB</i> c) LED PCB 1 <i>PCB Dimensions: 25.40mm x 17.78 mm</i> <i>Blank PCB</i> d) LED PCB 2 <i>PCB Dimensions: 25.40mm x 17.78 mm</i> <i>Blank PCB</i> e) LED PCB 3 <i>PCB Dimensions: 25.40mm x 17.78 mm</i> <i>Blank PCB</i>	1 Unit 1 Unit 4 units 1 Unit 4 Units 1 unit 1 Unit 4 Units
4.	Custom Corner Cut Fluoride Sensor PCB <i>PCB Dimensions: 50.80 x 109.35 mm</i>	5 Units

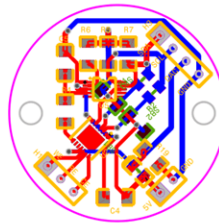
pH sensor with components



ID	Name	Designator	Footprint
1		100 R4	R1206
2	ADS1115IDGST	U5	VSSOP-10_L3.0-W3.0-P0.50-LS4.9-BL
3	1-1337543-0	BNC	BNC-TH_1-1337543-0
4	0.1u	C1,C2,C3,C4,C5,C11	C1206
5	10u	C9,C10	C1206
6	RS485	H2	HDR-F-2.54_1X4
7	DS18B20	H3	HDR-F-2.54_1X3
8	LED-0805_R	485-RX,485-TX,PWR	LED0805_RED
9	MMBT2222ALT1G	Q1	SOT-23-3_L2.9-W1.3-P1.90-LS2.4-BR
10	TL431BIDBZR	U1	SOT-23-3_L2.9-W1.3-P1.90-LS2.4-BR
11	1k	R1	R1206
12	10k	R3,R5,R6,R7	R1206

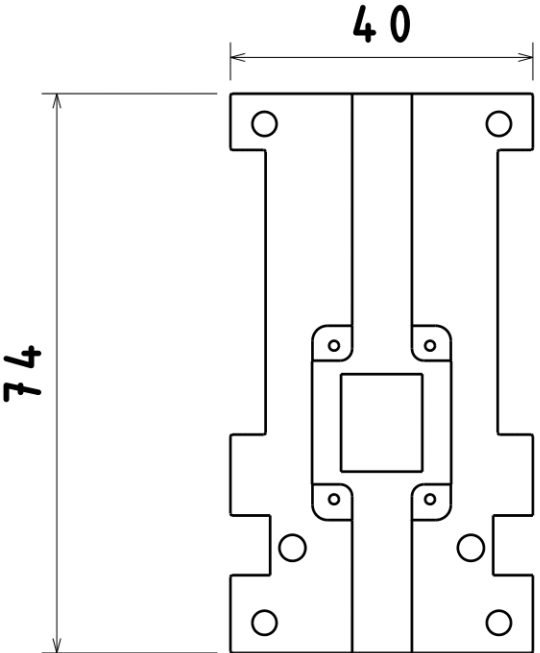
13		10 R8,R9	R1206
14	4.7K	R10,R11,R13,R14,R15,R20	R1206
15		120 R12	R1206
16	1K	R17,R18,R19	R1206
17	20KΩ	R2	RES-ADJ-TH_3362P
18	LMP7721MAX/NOPB	U2,U3	SOIC-8_L4.9-W3.9-P1.27-LS6.0-BL
19	DFR1117 Beetle ESP32 C6 Mini	U4	BEETLE BOARDS THT
20	AMS1117-5.0RG	U6	SOT-223-3_L6.4-W3.5-P2.30-LS7.0-BR
21	MAX485ECSA-T	U7	SOIC-8_L5.0-W4.0-P1.27-LS6.0-BL

Amperometric_Sensor PCB with SMD components

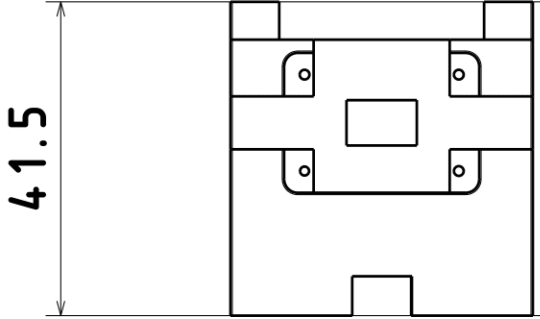


ID	Name	Designator
1	10k	R1,R2,R5,R6,R7
2	HDR-F-2.54_1x2	5V
3	LED-0805_R	L
4	0.1u	C4,C5
5	ELECTRODE CONNECTION	H1
6	HDR-F-2.54_1x4	H3
7		100 R4
8	1K	R19
9	LMP91000SDE/NOPB	U2
10	ADS1115IDGST	U5
11	1-1337543-0	BNC
12	0.1u	C1,C2,C3,C4,C5,C11
13	10k	R3,R5,R6,R7
14	4.7K	R10,R11,R13,R14,R15,R20

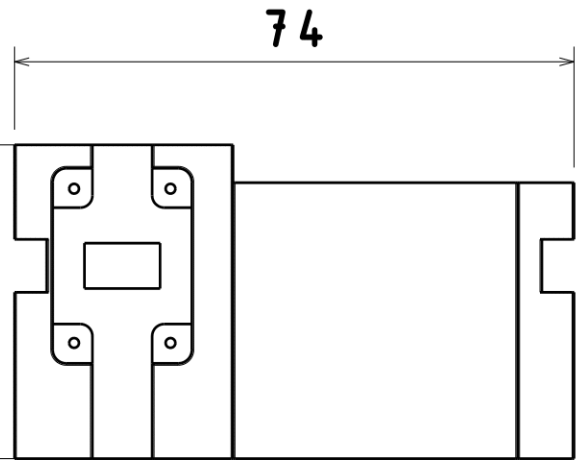
Cuvette Setup for Colour Sensor



Bottom view
Scale: 1:1

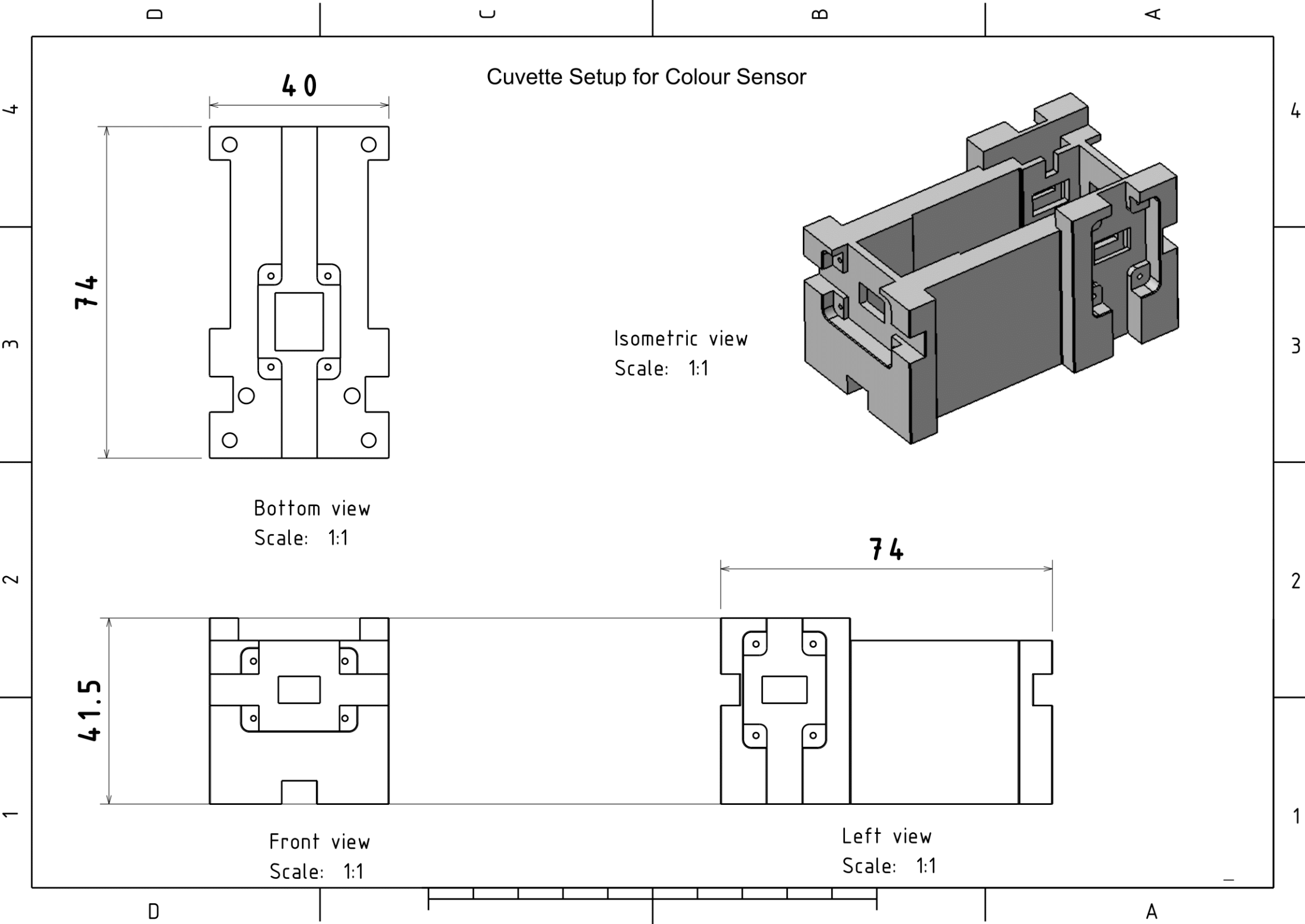
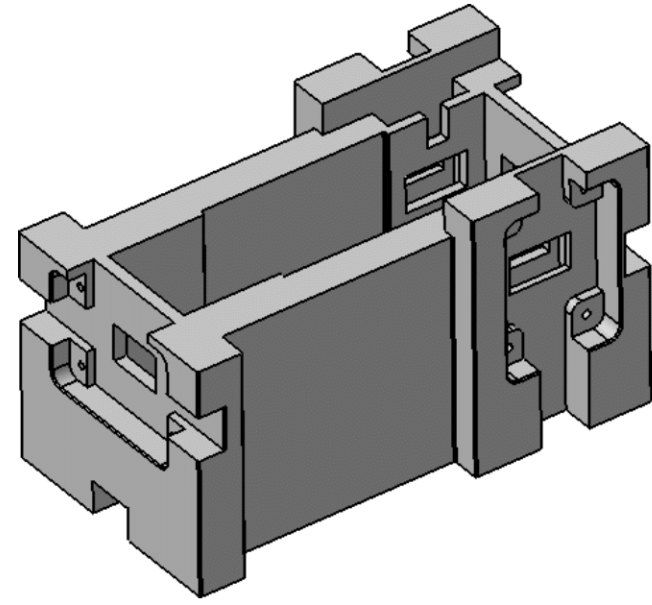


Front view
Scale: 1:1

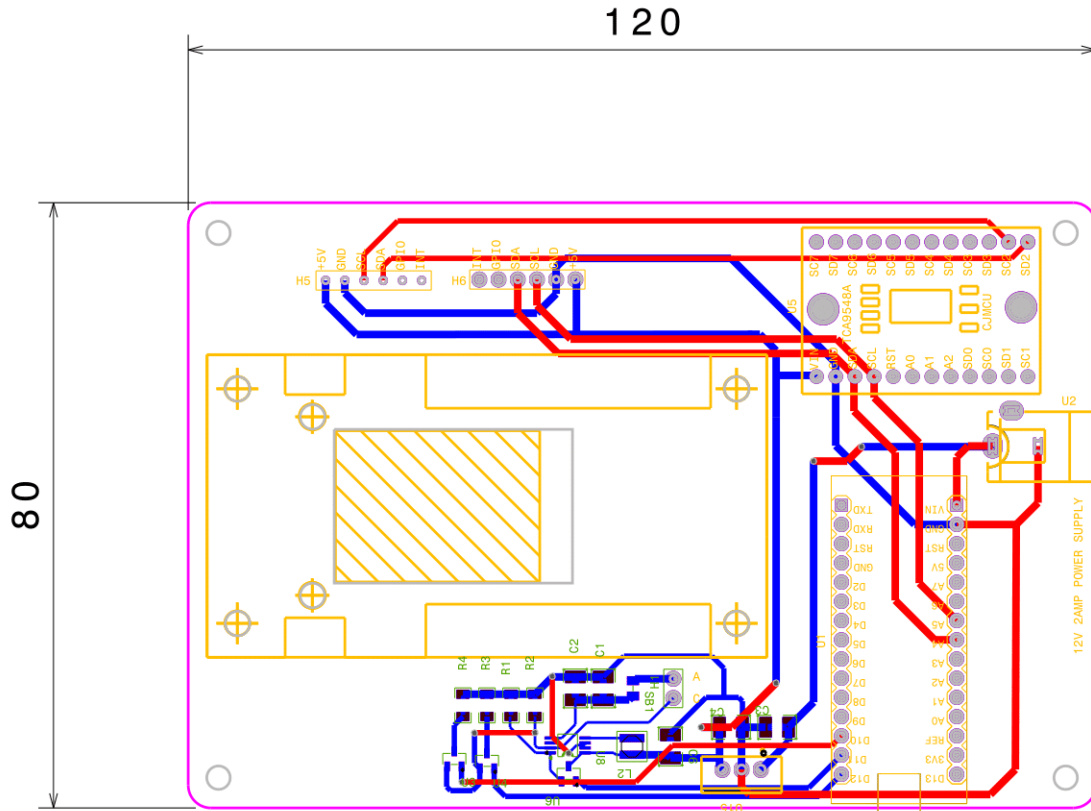


Left view
Scale: 1:1

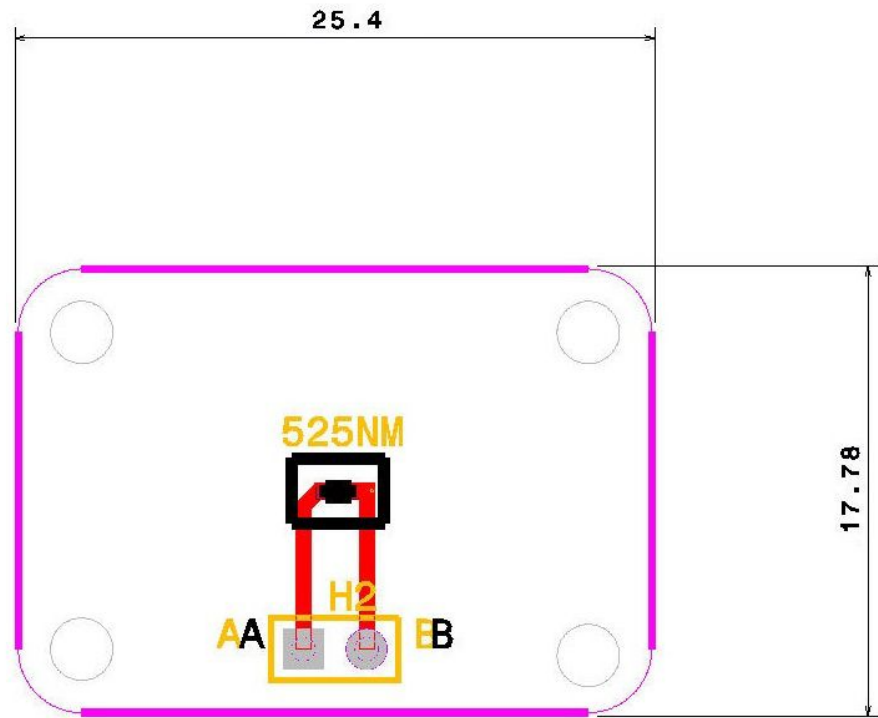
Isometric view
Scale: 1:1

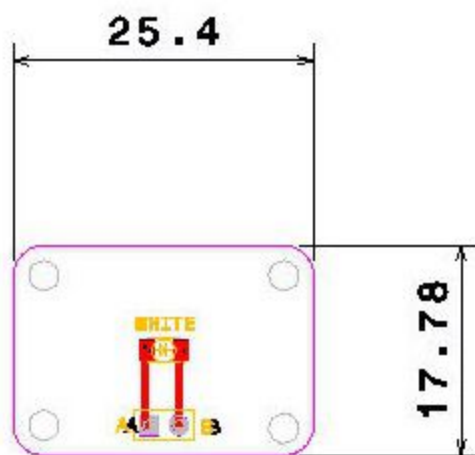


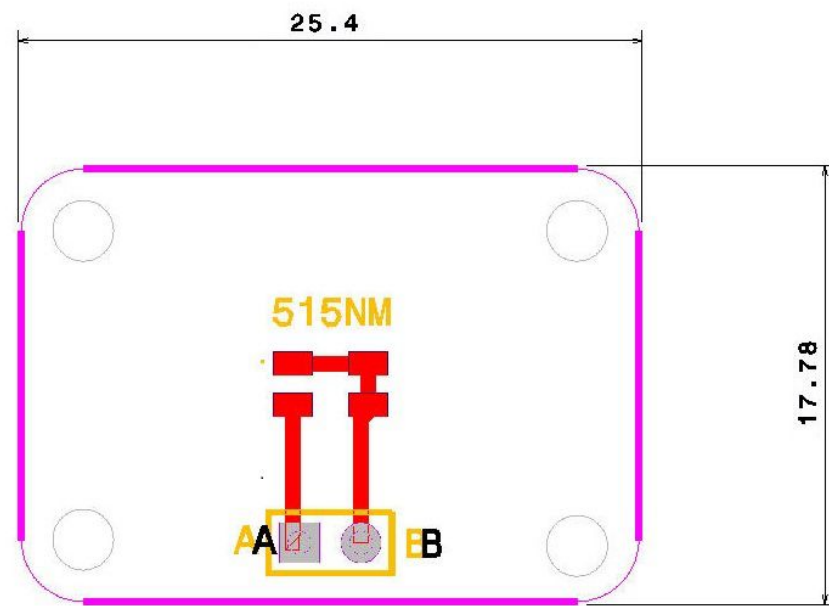
Main PCB for colour sensor with components



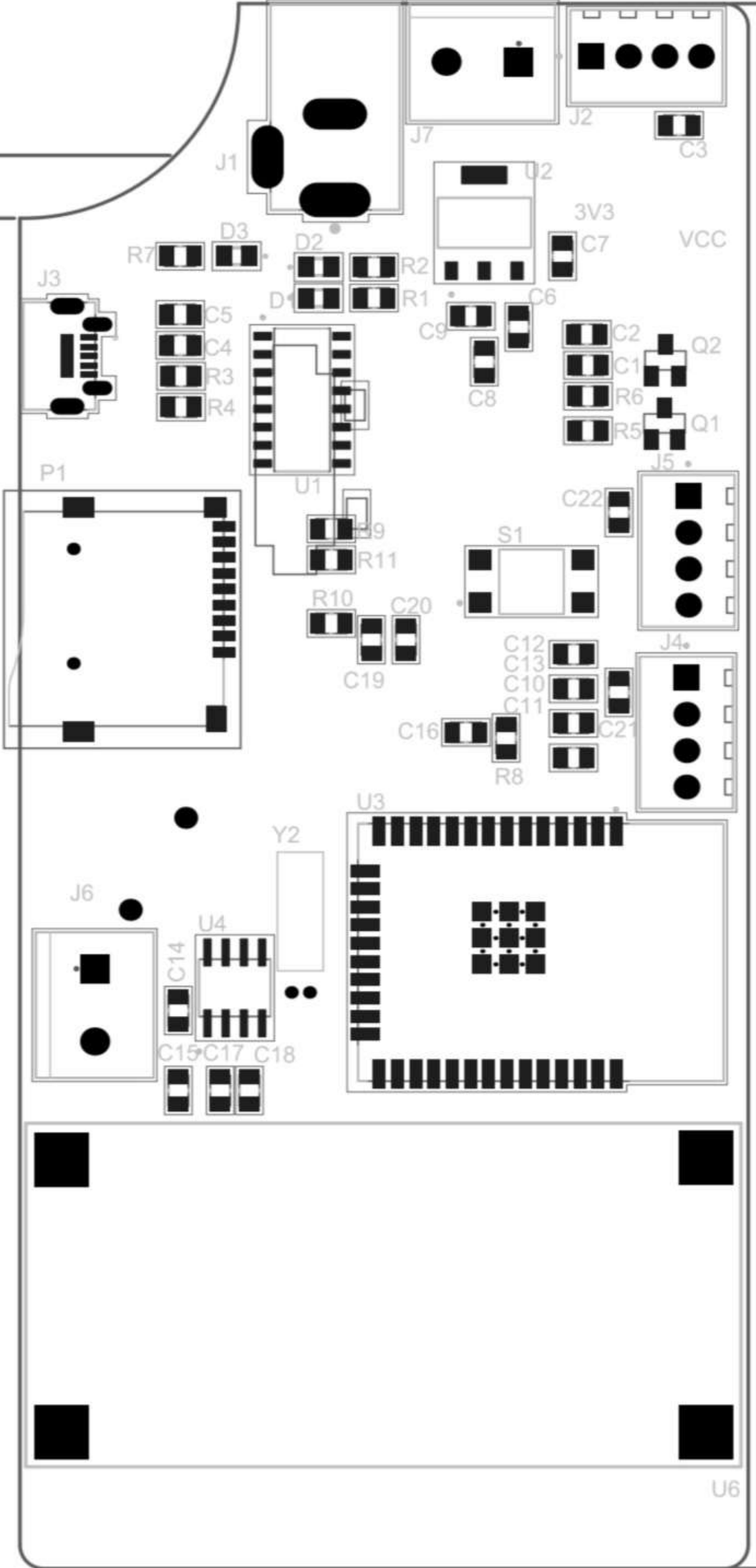
ID	Name	Designator	Footprint
1	Adafruit AS7341	H5,H6	HDR-F-2.54_1X6
2	ARDUINO_NANO	U1	COMM-TH_ARDUINO_NANO
3	POWER-JACK	U2	DC-IN-TH_POWER-JACK
4	L7805CV-DG	U15	TO-220-3_L10.0-W4.5-P2.54-L
5	cjmcu tca9548a	U5	CJMCMU-TCA9548A
6	HDR-F-2.54_1x2	H1	HDR-F-2.54_1X2
7	DMN2050L	U3,U4,U6	SOT-23-3_L2.9-W1.3-P1.90-LS2.4-BR
8	MCP1643T-I/MS	U8	MSOP-8_L3.0-W3.0-P0.65-LS4.9-BL
9	744025004	L2	WE-TPC_282892
10	C1210	C1,C2,C3,C4,C6	C1210
11	1m	R1	R1206
12		2.4 R2	R1206
13		4.7 R3,R4	R1206







4.39



109.35

U6

