

February 03, 2026

**Reference:** CSIO30012026HCP005772 / 2025-26

**Subject:** Call for Expression of Interest (EoI)/quotation for the purchase of goods/fabrication job work for the ongoing project activities- reg

It is informed that following items are proposed to be purchased /fabricated. Interested parties are requested to **submit quotation** through email/hard copy to the undersigned **within next three days** from the date of publishing of notice.

**Items/Goods/Job work required**

Sr. No.	Description of the items/Goods/Job work	Quantity
1.	Design, Fabrication and Assembly of Printed Circuit Board A (PCB A) Version 2.0 [size:55mm x 22mm]  <b>Note:</b> Double Sided PTH PCB, <b>For Assembly</b> ; Required Components also included in the scope of work	05

**Terms and Conditions:**

Delivery: For CSIR-CSIO, Chandigarh

Lead time/delivery time: 1-2 weeks

Payment: After delivery and successful inspection



**Dr Babankumar S. Bansod**  
**Chief Scientist & Project Leader**  
scientist\_babankumar.csio@csir.res.in  
M:9888520252

**HEAD ISD**, with a request to display on the CSIO website

The schematic diagram illustrates the power section of the circuit. It features an LM1117F-5.0 voltage regulator (U9) with its VIN pin connected to a +5V supply, its VOUT pin connected to the VCC supply, and its ADJ/GND pin connected to ground. A 10uF capacitor (C10) is connected between the VOUT pin and ground. The VCC supply is also connected to a +5V supply and a 10uF capacitor (C9) to ground. The VCC supply is connected to an LED (LED3) through a 1k resistor (R19), which is then connected to ground.

# SMA Connector

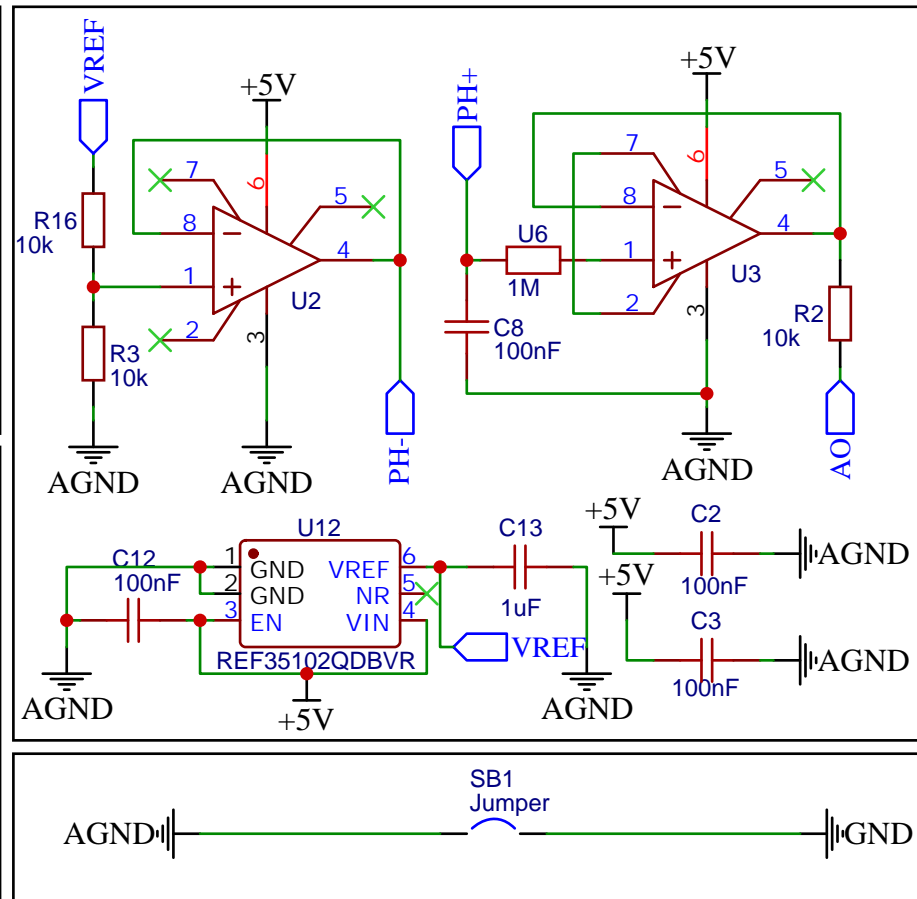
The diagram illustrates an SMA connector circuit. It features three input ports on the left, labeled PH-, PH+, and PH-. The PH+ port is connected to a central terminal labeled 2. The PH- ports are connected to terminals 3 and 4, which are connected to each other and to terminal 5. The output is a single port on the right labeled RF1.

LM35  
Temperature Sensor  
Probe

DS18B20  
Temperature Sensor  
Probe

LM35  
Temperature Sensor  
Probe

DS18B20  
Temperature Sensor  
Probe

[illegible]